

# **CRAZY SEAL INSTALLATION GUIDELINE**



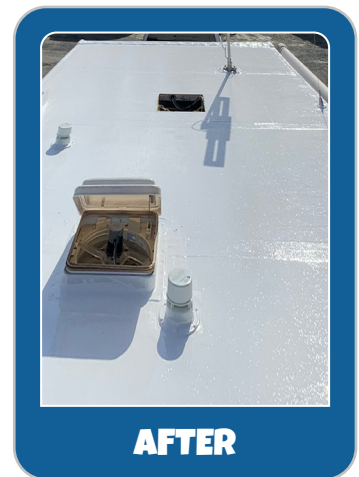
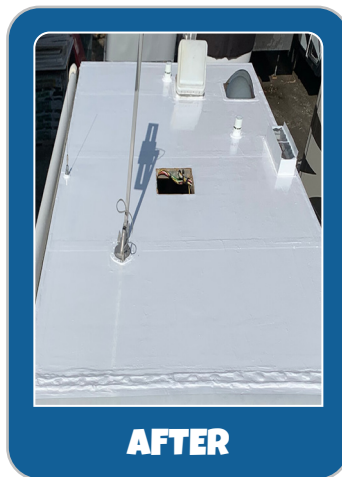
**VISIT [CRAZYSEAL.COM/INSTALLATION](https://crazyseal.com/installation)  
FOR ACCOMPANYING VIDEO TUTORIALS**

**[CRAZYSEAL.COM](https://crazyseal.com)**

# INSTALLATION OVERVIEW

Congratulations on your purchase of a Crazy Seal roofing system! These installation instructions are intended to be a guide to assist you in properly applying our system to your application. We understand that every project is unique. These instructions will provide a guided example of how each step of our system is applied in an RV roofing scenario.

**Before you begin, be sure to take a lot of "before" photos from the front and back of your application!** When you compare these to the "after" photos you take when your installation is complete, you will be blown away at the difference. These before and after photos rock! We look forward to seeing all of your DIY handiwork in the crazy transformation pictures!



Our system is extremely versatile and can be used on thousands of different applications. Because RV roofs typically have several different fixtures and components spread throughout the roof, it provides an excellent example to demonstrate our system on. Please use each step of our system in the order of application lined out in this document to completely seal your particular application.

The Crazy Seal installation process is really quite simple! Because we have combined the highest quality components into our roofing system, including extremely high-grade silicone infused with high-grade fibers, we have been able to reduce the number of steps in a typical roofing installation drastically. This unique system makes a true industrial grade DIY roofing installation possible.

The installation process consists of three simple steps:



**1. CRAZY CAULK & CRAZY TAPE**



**2. CRAZY PATCH**



**3. CRAZY SEAL**

# TOOLS

Because each project is unique, the tools you need for your particular project could vary. Some of these items will be necessary, but could vary in quantity depending on your project! For example, if you are applying a two layer system, you will need more rollers, brushes, and buckets than someone who is only applying a single layer system. This section is designed to let you know what items are necessary and to give you some suggestions on items that can be very helpful if you have them.



**Quick Tip:** You will be climbing up to and down from your roof many times during this process. It helps not to rely solely on an RV or other application's attached ladder. For more stability, use an extension ladder with a piece of foam noodle or towel on each side to get up onto and dismount from the roof. This provides more stability when transporting materials and yourself up and down. The foam noodle helps to protect whatever you are leaning the ladder against.



# ROOF PREPARATION

The first step of the process is to inspect your roof. In all roofing installations, a solid foundation is paramount to any system that is installed. This applies to the Crazy Seal roofing system as well.



**WALK THE ROOF & IDENTIFY ANY PROBLEM AREAS**



**INSPECT PENETRATIONS TO SEE IF ANY AREAS NEED FIXING**

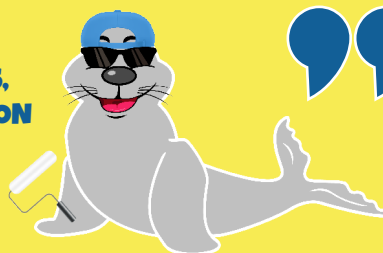
Before the installation begins, a thorough inspection of the roof should be performed. Walk around the roof and identify any leaks or problem areas that you may have. Check the roof for integrity. Identify any rotted wood, soft spots, rubber delamination, broken vents, etc. The better you inspect, the better your results. Fix any problems that you find.

**For this installation, we will assume that we are beginning with a base foundation of newly installed wood. If you are doing a hybrid installation (partial wood decking and partial over existing membrane), to ensure the best possible results, make sure to fix any wood damage, cracked vents, major delamination of rubber, etc. prior to beginning installation of the Crazy Seal Roofing System.**

**If you are doing a hybrid installation, please refer to our installation manual covering an over existing membrane installation for information on how to handle cleaning, existing sealants, and other instructions pertaining to that type of installation. Once you are confident that the roof is in good condition with no underlying structural issues, proceed to the next step!**



**CRAZY CURTIS SAYS,  
"PROPER PREPARATION  
PREVENTS POOR  
PERFORMANCE!"**





## PREPARATION WITH MASKING TAPE

With the roof prepared with wood, it is time to finalize our roof preparation by taping off any areas where you do not want Crazy Seal to stay.

Using a product like common blue painter's tape, tape off all necessary fixtures and edges like skylights, railings, end caps, etc.

Remember while taping that tape must be removed while the membrane is still wet or edge pulling can occur. To help with this, apply tape in 5 foot increments or less. This will help you remove the tape quickly while you are applying the Crazy Seal products.

Apply a clean line of tape to the front and back caps past any penetrations in the roof. Applying a clean line of tape a few inches beyond any termination bars in the front and back helps to create a nice finished look.

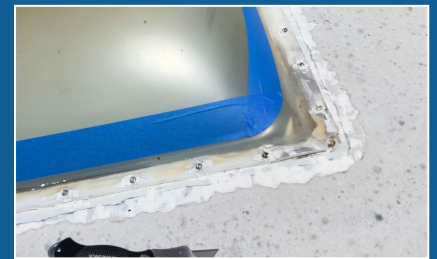
Once the roof is clean and the sides and fixtures are taped off, it is time to move on to the installation of the Crazy Seal System!



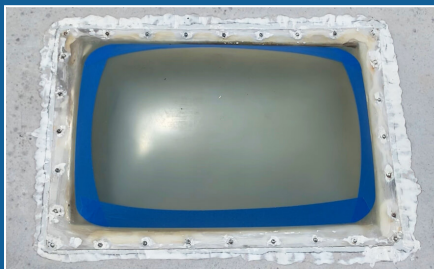
**APPLY A LINE OF TAPE PAST TERMINATION BARS**



**USE A KNIFE TO CUT ROUND CORNERS ON SKYLIGHTS**



### APPLY MASKING TAPE TO ALL AREAS YOU DON'T WANT CRAZY SEAL TO STAY



**TAPE AROUND SKYLIGHTS**



**TAPE AROUND ANTENNAES**



**TAPE AROUND AC UNITS**



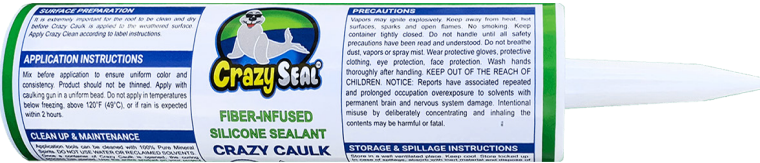
**TAPE GUTTERS**



**TAPE SIDES**

# APPLYING THE CRAZY SEAL PRODUCTS

There are four components that come in a typical Crazy Seal Direct to Deck Kit. These include Crazy Caulk, Crazy Tape, Crazy Patch, and Crazy Seal. Let's go over briefly what each product is and what it is used for.



**CRAZY CAULK** is a fiber infused, moisture-curing sealant with excellent adhesion to most surfaces. Crazy Caulk is generally used to seal seams, such as the seams along the sides of an RV or seams created where components such as gutter systems attach.



**CRAZY TAPE** is a special tape created for sealing seams on a direct to deck installation. It is also useful for scenarios where repairs are required. Crazy Tape has a strong adhesive on one side and a fabric material on the other. This gives you the ability to add additional structural integrity to the seam with the adhesive, while the fabric on top is designed to allow the Crazy Seal System to adhere to it.

**CRAZY PATCH** is a fiber-infused, moisture-curing mastic with excellent adhesion to most surfaces. Crazy Patch is generally used to seal all existing penetrations. Simply stated, wherever sealant was previously applied to cover penetrations, Crazy Patch will be used to ensure that penetrations are sealed. Crazy Patch can also be used alone as a single component repair product to patch leaks.



**CRAZY SEAL** is a weatherproof, fiber-infused silicone roof membrane. Applying Crazy Seal to any weathered roof substrate will help ensure it is protected against degradation caused by harsh UV rays, severe weather, mold and mildew. It will not chalk or blister. The unique fiber-infused silicone makeup of Crazy Seal remains permanently flexible yet strong.



Before proceeding, we must make a note on terminology. Any time the term “**base layer**” is used, this refers to the first layer of Crazy Seal Roof Membrane that will be applied to the roof. Any time the term “**top layer**” is used, this refers to the final layer of Crazy Seal Roof Membrane that will be applied to the roof.

Our recommended Crazy Seal System is a Two Layer System. In this system, you will have a “base layer” that goes on first, then a “top layer” that goes on last.

With that being said, if you have chosen a Single Layer System, you will essentially only be applying the “base layer” to your application.



## APPLYING CRAZY CAULK

Begin by loading a tube of Crazy Caulk into a caulk gun. In addition to the caulk gun, you will want to have a small amount of your Crazy Seal base layer poured into a smaller container to work with as you go. Be ready with the caulk gun, small container of Crazy Seal base layer, and a brush when completing the following process.



**POUR SOME CRAZY SEAL BASE LAYER INTO SMALL CONTAINER**



**SEAL PRODUCT WHEN NOT IN USE TO PREVENT DRYING OUT**

Apply Crazy Caulk to tops of gutters and immediately apply a layer of Crazy Seal base layer on top to smooth out the Crazy Caulk. This is intended to be done while the caulk is still wet to promote adhesion and a smooth final look. Using a small brush with the base layer will help create a nice smooth finish with our Crazy Caulk sealant. To save time in the long run, go ahead and “cut in” the sides of your roof with the Crazy Seal base layer as you go. Use the brush as you go along to glide a liberal layer of the Crazy Seal base layer a few inches in from the outside edges. This will make it easier on you later when you roll out your Crazy Seal base layer with a roller.



**APPLY CAULK**



**TOOL IN WITH FINGER**



**CUT-IN WITH CRAZY SEAL TO PREPARE FOR ROLLING**

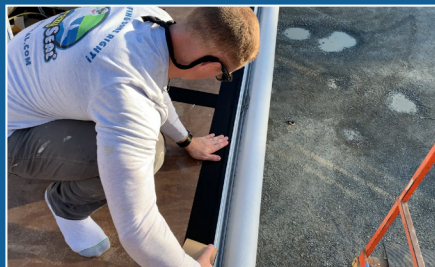


## APPLYING CRAZY TAPE

Apply Crazy Tape to seams and edges. Be sure to straddle seams on both sides to promote good adhesion. Be careful with this tape, as the adhesive is incredibly strong!



**TAPE SEAMS**

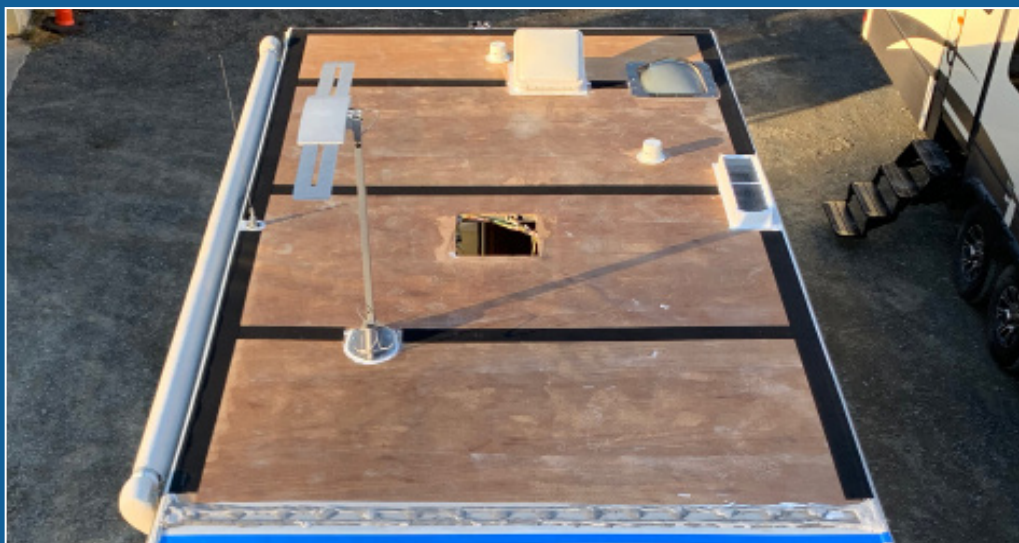


**TAPE EDGES**



**CUT WITH RAZOR AS YOU GO**

At this point, the top of the roof should be prepped with Crazy Tape.



**ROOF PREPPED WITH CRAZY TAPE**

## APPLYING CRAZY PATCH

Proper application of Crazy Patch is a critical component of your overall installation success. Crazy Patch is designed to be used over the termination strips on your front and back caps, around all of the flanges of skylights, vents, antenna bases, around the base of ladders, etc. Basically, any area that originally had sealant on it, you need to install Crazy Patch on that area as well.

This piece of the Crazy Seal System is very thick. It is designed to permanently seal all of the areas where water intrusion and dirt and debris can create entry points into your roof. By sealing all of these areas with Crazy Patch and going over them with the Crazy Seal base layer, you will be ensuring that vulnerable areas that have been penetrated with screws and bolts will be protected and sealed.

Begin by opening a container of Crazy Patch. In addition to the Crazy Patch, you will want to have a small amount of your Crazy Seal base layer poured into a smaller container to work with as you go. Be ready with the Crazy Patch, a small container of Crazy Seal base layer, and 2 brushes when completing the following process.



**HAVE CRAZY PATCH, SMALL CONTAINER OF CRAZY SEAL, & TWO BRUSHES READY**



**COVER ALL PENETRATIONS & TERMINATION BARS WITH CRAZY PATCH**



**APPLY A LAYER OF CRAZY SEAL BASE LAYER OVER CRAZY PATCH**

## TERMINATION BARS

Begin by applying Crazy Patch over the front and rear cap termination bars. See other set of installation instructions if previous sealant is still present.

To apply Crazy Patch, dip a 3" brush and load it with a thick amount of product. Straddling the termination bar approximately 3" on each side, place liberal amounts of Crazy Patch down and smooth it out with your brush. Continue to place sizeable amounts down with each scoop, then use the brush to smooth out the product on top of the bar. The goal here is to completely seal the area around the termination bar, flowing product over the bar and onto the roof and cap.

Like the Crazy Caulk application, every few feet that you apply Crazy Patch, go back and immediately apply a layer of Crazy Seal base layer on top to smooth out the Crazy Patch. This is intended to be done while the Crazy Patch is still wet to promote adhesion and a smooth final look.

If you are applying product all the way to the tape you placed past the termination bar in the preparation stage, be sure to remove it while the product is still wet. This will provide nice, clean termination lines.





**APPLY A THICK AMOUNT OF CRAZY PATCH OVER TERMINATION BARS**



**PAINT OVER CRAZY PATCH WITH CRAZY SEAL WHILE STILL WET**



**REMOVE PAINTER'S TAPE WHILE PRODUCT IS STILL WET TO PREVENT EDGE PULLING**

## REMAINING PENETRATIONS

Apply Crazy Patch to all penetration areas, using a 3" brush to cover all penetration areas where sealant was originally placed. Continue this process around all of the flanges of skylights, vents, antenna bases, around the base of ladders, etc. Work to flow the product into and up the vertical edge of flanges and other fixtures. In all areas, continue to apply a layer of Crazy Seal base layer on top to smooth out the Crazy Patch.

Be sure as you go along to be removing any tape that you applied in the preparation phase while the product is still wet. This will provide nice, clean termination lines around your fixtures.



**APPLY A THICK AMOUNT OF CRAZY PATCH OVER ALL PENETRATIONS LIKE AROUND SKYLIGHTS**



**REPEAT WITH ALL FIXTURES ON THE ROOF WHERE PENETRATIONS ARE PRESENT**



## APPLYING CRAZY SEAL ROOF MEMBRANE

You have arrived to the fun part! Once all of the penetrations are sealed and the roof is cut in around fixtures, it is time to roll on the base layer to the main body of the roof! This is definitely one of the most satisfying parts of the process. It's here that you get to see the full application come to life!

Before getting setup to roll out your base layer, we recommend running a leaf blower to remove all of the dry particles that could have been tracked up on the roof. This will remove unwanted debris before applying the base layer.



**REMOVE DRY PARTICLES WITH A LEAF BLOWER**

With the roof clear of debris, it's time to roll out the base layer. Begin by setting up a roller frame and a 1/2" nap roller on an extension pole. Be ready with an open container of Crazy Seal base layer and the roller on an extension pole when completing the following process.



**HAVE YOUR ROLLER FRAME READY WITH 1/2" NAP ROLLER ON AN EXTENSION POLE & CRAZY SEAL BASE LAYER**

It is best to wear a pair of clean socks and no shoes when rolling out the base layer! This will help to keep the roof clean as you apply the base layer.

Begin at the area of the roof farthest away from where you will get off of the roof! People usually get on and off the roof from the rear, so you will typically begin your application in the front.

Fully submerge the roller head into the pail or bucket containing the base layer and liberally apply to the roof surface. It is normal to pull large amounts of product onto the surface, dripping it onto the surface as you place the roller on the roof. With the roller head on the roof, "glide" the roller forward and back from the spot where you place the roller. You will be pushing product forward and pulling product back in even strokes.

The action you want to have here is more of a gliding motion than rolling. In fact, we encourage people to have a "quiet" roller head. This means that you don't hear the traditional sticky sound like you hear when rolling paint onto a wall. This allows you to glide the product on in a nice, thick layer. The roller should remain wet throughout the entire process. **Be sure to roll out any runs or drips on the roof immediately to prevent them from setting up.**

### FULLY SUBMERGE ROLLER INTO BUCKET & LIBERALLY APPLY TO ROOF SURFACE





**IMMEDIATELY ROLL OUT ANY RUNS OR DRIPS TO PREVENT THEM FROM SETTING UP**

Remember, this isn't paint! This is a high-grade, fiber-infused silicone roofing system. Be sure to apply a liberal amount to ensure you properly apply membrane to the entire roof surface. The goal is to properly seal every square inch of your roofing application.

Work the product onto the entire surface and finish at the ladder where you will get off the roof. Once you are down to the last 4 or 5 square foot patch of roof beside the ladder, remove the roller frame from the extension pole, submerge the roller in the Crazy Seal base layer one last time, and set the roller down by itself on the remaining unlayered roof surface.

Leave the roller there as you carry the remaining product down off the roof. From there, climb back up and finish rolling the last patch of roof by hand. Safely climb down with the empty roller in hand.

### **WHEN YOU ARE DOWN TO THE LAST 4 OR 5 SQUARE FEET:**



**REMOVE ROLLER FRAME FROM EXTENSION POLE, SUBMERGE IN CRAZY SEAL & SET ON ROOF**



**LEAVE ROLLER ON ROOF WHILE YOU CLIMB DOWN WITH CRAZY SEAL BUCKET**



**CLIMB BACK UP AND FINISH ROLLING OUT LAST PATCH OF ROOF BY HAND**

Let the base layer dry a minimum of 4 hours or until the membrane is dry to the touch and does not leave indentations when weight is applied. We recommend letting the membrane dry overnight before attempting to walk on it or applying any additional layers.

With the base layer complete, you are on to the final process, applying additional layers.

If you are only applying a Single Layer System to your application, your project is nearly complete! Simply skip the next section on applying additional layers.

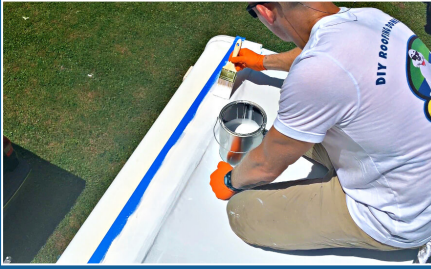
## **PREPARE FOR ADDITIONAL LAYERS**

At this point, you have completed a full single layer installation! Now it is time to apply our final layer. This is basically a simplified version of the original installation process.

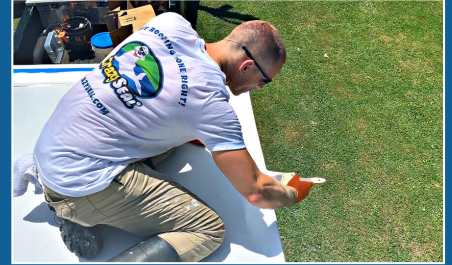
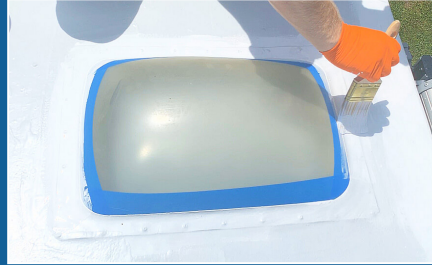
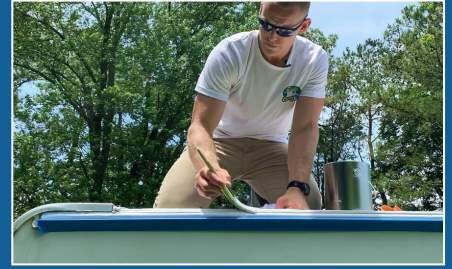
Now that the roof is sealed with Crazy Caulk, Crazy Patch, and the first layer of Crazy Seal, it is time to prepare for the final layer.

The process of applying Crazy Caulk and Crazy Patch is complete at this point. From here on, you will only apply additional layers of Crazy Seal Roof Membrane.





**TRIM IN ALL AREAS WITH CRAZY SEAL TOP LAYER THAT WOULD BE DIFFICULT TO REACH WITH A ROLLER**



**BE SURE TO PULL TAPE WHILE CRAZY SEAL IS STILL WET**

## **APPLYING THE TOP LAYER**

Now it's time to roll out the top layer. Repeat the instructions above for rolling out the top layer onto the main body of the roof. **As the base layer is typically a different color than the top layer, it should be easy to see where the top layer is being applied. This will help to ensure proper coverage on the entirety of your roof surface.**

**Let the top layer dry a minimum of 4 hours or until membrane is dry to the touch and does not leave indentations when weight is applied. We recommend letting the membrane dry overnight before attempting to walk on it or applying any additional layers.**

If you are applying a Two Layer System, give yourself a pat on the back! All of the Crazy Seal products are now completely applied!

If you are applying more than two layers, just continue this process as needed.



## GLIDE ROLLER FORWARD & BACK IN EVEN STROKES



**APPLY A LIBERAL LAYER OF CRAZY SEAL TOP LAYER TO ROLLER**



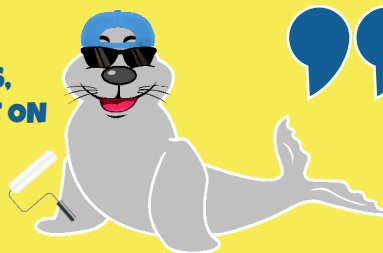
## FINALIZING THE INSTALLATION

Once the final layer is dry, any previously removed fixtures or covers should be re-installed. If any bolts or screws that penetrate the roof are exposed after the fixtures are re-installed, they should be sealed with Crazy Caulk. An example of this would be the screws that are exposed when mounting a vent cover.

Be sure to clean up and properly dispose of any remaining trash. If necessary, allow excess product in buckets to dry before disposal.

Once all fixtures are re-installed and your area is clean, your project is complete! You now have an incredible DIY roof that will stand the test of time. Congratulations on a job well done. Enjoy your Crazy Seal roof!

**CRAZY CURTIS SAYS,  
"GIVE YOURSELF A PAT ON  
THE BACK FOR A  
JOB WELL DONE!"**



# WARRANTY

Thank you for installing our Crazy Seal Roofing System! You now have a product on your roof that includes a 50 Year Crazy Seal Warranty!

To qualify for your warranty, please visit the warranty page of our website at [CrazySeal.com/warranty](http://CrazySeal.com/warranty).

Fill out our simple form and you will be qualified for 50 years of warranty coverage!

